

Fisheye Network Camera



 ONVIF

180° panoramic view (wall mount)
or 360 ° surround view (floor / ceiling mount)

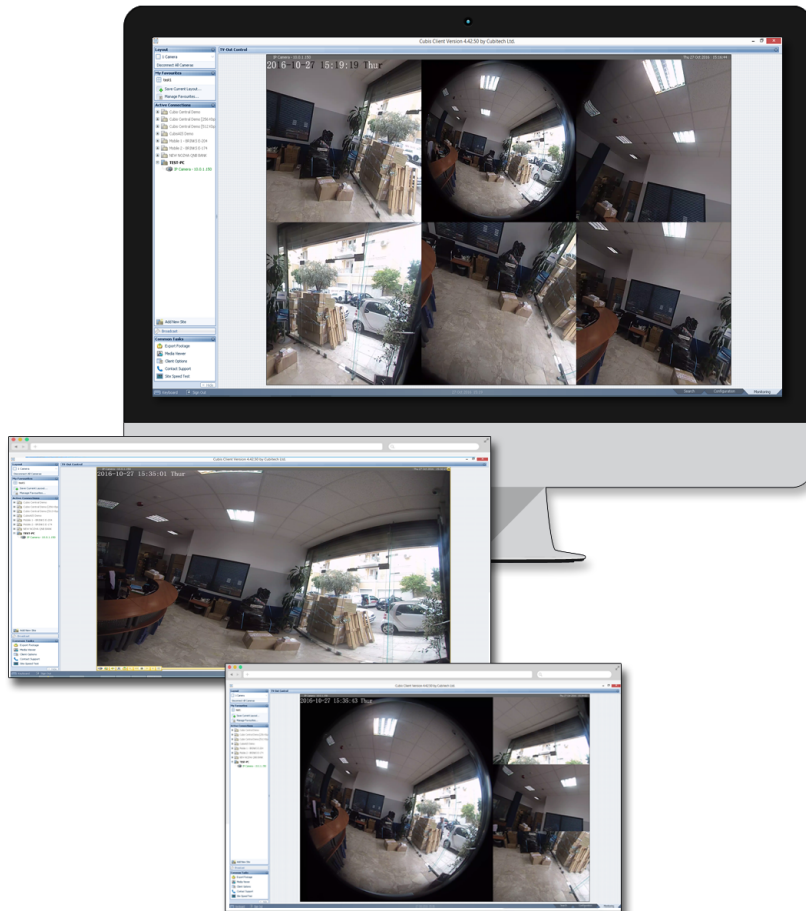
Unique De-warping process
for more **efficient coverage management**

Cost effectiveness by using
1 camera instead of 4

Single channel license required

With up to 7 key points of interest per FOV

6MP IP Fisheye Camera



- **Wide field of view without blind spots with fewer cameras and infrastructure required**
- **Operator flexibility by enabling both live & recorded monitoring of a scene**
- **With seamless integration with Cubis Software**
- **Extreme flexibility for diverse applications**

KEY FEATURES

- **6MP Resolution**
- **Low bitrate and excellent low light performance**
- **Unique De-warping Image**
- **3D DNR, dWDR, ICR, HLC**
- **Smart IR**

HEADQUARTER OFFICE
Discovery Court Business Centre
551-553 Wallisdown Road
Poole, Dorset, BH12 5AG, UK
T.: +44 (0) 1202 853237

EUROPEAN DISTRIBUTION CENTER
4-6 Kiprou Str.
177 78, Tavros, Athens, Greece
T.: +30 210 9580888
F.: +30 210 9580885

www.cubitech.com - info@cubitech.com

[@cubitech1](#) [cubitech](#) [company/cubitech](#)