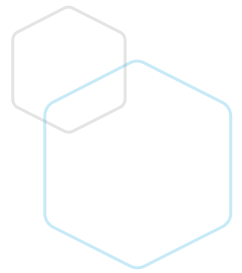




CB-DIS5028VW

5MP IR Dome Network Camera



Key Features

- > 1/3" progressive scan CMOS
- > 2.7~13.5mm motorized lens
- > 25fps@5MP(2560×1920)
- > Triple streams
- > Video Analytics Features
- > WDR, 3D DNR, ROI, HLC, BLC, Aisle mode, Defog
- > Smart IR up to 40m
- > IP66, IK10

SPECIFICATIONS

CAMERA

Image Sensor	1/3" Progressive Scan CMOS
Effective Pixels	2560(H)×1920(V)
Electronic Shutter	1/5~1/20,000s
Min. illumination	Color: 0.4Lux @(F1.2,AGC ON) , B/W: 0.04Lux @ (IR LED ON)
S/N Ratio	55dB
Day/Night	ICR
Wide Dynamic Range	WDR (120dB)
IR Range	Up to 40m
IR On/Off Control	Auto/ Manual
Pan/Tilt/Rotation Range	Pan: 0°~355°, Tilt: 0°~80°, Rotation: 0°~355°

LENS

Lens Type	Motorized
Iris	Fixed Iris
Focal Length	2.7~13.5mm
F Number	F1.4
Angle of View	105° ~ 35°
Focus Control	Motorized

VIDEO

Max. Resolution	5MP (2560×1920)
Video Compression	H.264, H.265, H265+
Streaming Capability	3 Streams
Stream / Frame Rate	Stream1: 2560×1920/2048×1536/1920×960 @25fps Stream2: D1/VGA/640×360/CIF/QVGA @25/30fps Stream3: VGA/CIF/QCIF @25/30fps
Bit Rate Control	CBR/VBR
Bit Rate	Stream1: 200Kbps~12Mbps Stream2: 100Kbps~6Mbps Stream3: 100Kbps~3Mbps
Image Enhancement	HLC / BLC / Anti-shake / Defog / WDR (120dB)
White Balance	Support
Gain Control	Auto/Manual
Noise Reduction	2D/3D DNR
Smart IR	Support
Mirror	Support
Aisle Mode	Support
Region of Interest	Support
Motion Detection	Support
Privacy Masking	Support

AUDIO

Compression	G.711, RAW_PCM
Bit Rate	8kbps, 16kps, 64kbps

NETWORK

Protocols	IPv4/IPv6, 802.1x, HTTP, HTTPS, TCP/IP, UDP/IP, RTSP, DHCP, NTP, RTCP/ RTP, PPPoE, SMTP, DNS, UPnP, FTP, ARP, SNMP, IGMP
Interoperability	ONVIF, SDK, CGI
Streaming Method	Unicast
Max. User Access	10 Users
Web Viewer	<IE11, Chrome, Firefox
Smart Phone	IOS, Android

INTELLIGENCE

IVS	Perimeter, Single Virtual Fence, Double Virtual Fences, Loiter, Multi Loiter, Object Left, Object Removed, Abnormal Speed, Converse, Illegal Parking, Signal Bad
-----	--

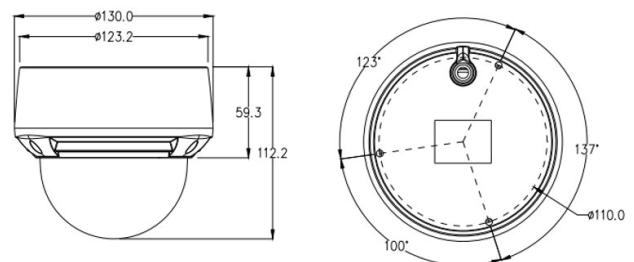
INTERFACE

Ethernet	1 Ethernet (10/100 Base-T) RJ-45 Connector
Audio	1ch Input, 1ch Output
Alarm	1ch Input, 1ch Output
CVBS Output	N/A
Reset Button	Support
Storage	Built-in Micro SD/SDHC/SDXC slot, up to 128GB

ELECTRICAL

Power Supply	DC12V/PoE (IEEE 802.3af)
Power Consumption	3.5W (IR LED OFF), 8W (IR LED ON)
Operating Temperature	-30°C ~ 50°C (-22°F ~ 122°F)
Operating Humidity	Less than 90% RH
Ingress Protection	IP66, IK10
Certifications	CE / FCC
Casing	Metal
Dimensions	Φ 130 × 112mm
Net Weight	0.8Kg

DIMENSIONS



CUBITECH LTD

R&D 12 Basepoint Business Centre, Enterprise Close, Christchurch, Dorset, Poole BH23 6NX, UK, T +44 (0) 1202 853237

DISTRIBUTION CENTER 4-6 Kiprou Str., 177 78, Tavros, Athens, Greece | T +30 210 9580887-8, F +30 210 9580885

E. info@cubitech.com | www.cubitech.com